

Air Conditioning

Product Information

PEFY-P-VMH(S)-E(2)

High Static Pressure Ceiling
Concealed Ducted Indoor Unit

Making a
World of
Difference

CITY MULTI



With improved design flexibility as a result of increased external static pressure, the **PEFY-P-VMH(S)-E(2)** allows authentic duct air conditioning within the strictest aesthetic confines.

Key Features

- External static pressure of up to 250Pa
- Greater flexibility for duct extension, branching air outlet configuration
- Reduced noise levels due to the centrifugal fan
- Duct can be connected to intake side
- Drain lift-pump (option) 550mm of lift
- DC fan motor on P200 and P250



Cooling | Heating | Ventilation | Controls

Air Conditioning

Product Information

PEFY-P-VMH(S)-E(2)
High Static Pressure Ceiling
Concealed Ducted Indoor Unit

Making a
World of
Difference

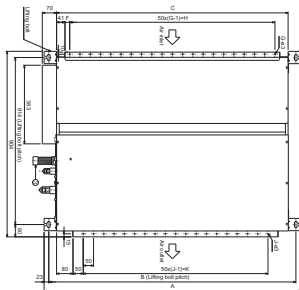


INDOOR UNITS		PEFY-P80VMH-E2	PEFY-P100VMH-E2	PEFY-P125VMH-E2	PEFY-P140VMH-E2	PEFY-P200VMHS-E	PEFY-P250VMHS-E
CAPACITY (kW)	Heating (nominal)	10.0	12.5	16.0	18.0	25.0	31.5
	Cooling (nominal)	9.0	11.2	14.0	16.0	22.4	28.0
	UK Heating	10.0	12.5	16.0	18.0	25.0	31.5
	UK Total Cooling - Hi (Sensible)	8.10 (6.10)	10.10 (8.30)	12.60 (9.50)	14.40 (10.80)	20.20 (15.60)	25.20 (19.30)
	UK Total Cooling - Mi2	-	-	-	-	-	-
POWER INPUT (kW)	UK Total Cooling - Mi1	-	-	-	-	19.33	24.10
	UK Total Cooling - Lo	7.27	8.95	11.16	12.77	17.84	22.21
	Heating (nominal)	0.32	0.48	0.48	0.48	0.63	0.82
AIRFLOW (l/s)	Cooling (nominal)	0.32	0.48	0.48	0.48	0.63	0.82
	Lo-Hi	300-417	442-633	442-633	467-667	833-1017-1200	967-1183-1400
EXTERNAL STATIC PRESSURE (Pa)		100-150-200	100-150-200	100-150-200	100-150-200	50-100-150-200-250	50-100-150-200-250
SOUND PRESSURE LEVEL (dBA) (150Pa)		38-43	38-44	38-44	38-44	36-39-43	39-42-46
WEIGHT (kg)		57	66	66	68	97	100
DIMENSIONS (mm)	Width	1030	1195	1200	1200	1250	1250
	Depth	900	900	900	900	1120	1120
	Height	380	380	380	380	470	470
ELECTRICAL SUPPLY		220-240v, 50Hz	220-240v, 50Hz	220-240v, 50Hz	220-240v, 50Hz	220-240v, 50Hz	220-240v, 50Hz
PHASE		Single	Single	Single	Single	Single	Single
RUNNING CURRENT (A) Heating / Cooling		1.47 / 1.47	2.34 / 2.34	2.34 / 2.34	2.35 / 2.35	3.18 / 3.18	4.14 / 4.14
FUSE RATING (BS88) - HRC (A)		6	6	6	6	6	6
MAINS CABLE No. Cores		3	3	3	3	3	3

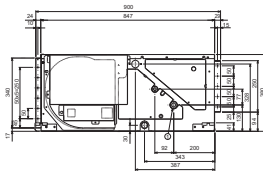
PRODUCT DIMENSIONS

PEFY-P80/100/125/140VMH-E2

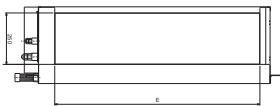
Upper View



Side View

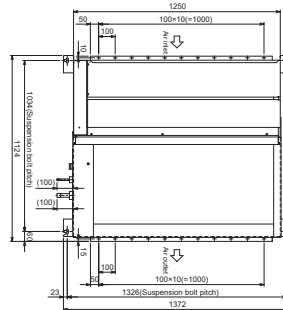


Front View

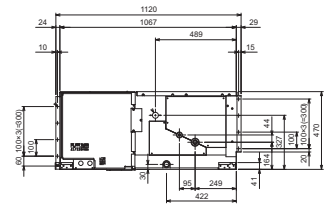


PEFY-P200/250VMHS-E

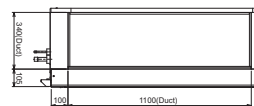
Upper View



Side View



Front View



Model	A	B	C	F	G	H	J	K
PEFY-P80VMH-E2	1050	1004	930	25	17	800	15	700
PEFY-P100-140VMH-E2	1250	1204	1130	25	21	1000	19	900



Telephone: 01707 282880
email: air.conditioning@meuk.mee.com
web: airconditioning.mitsubishielectric.co.uk

UNITED KINGDOM Mitsubishi Electric Europe Living Environment Systems Division
Travellers Lane, Hatfield, Hertfordshire, AL10 8XB, England General Enquiries Telephone: 01707 282880 Fax: 01707 278881

IRELAND Mitsubishi Electric Europe Westgate Business Park, Ballymount, Dublin 24, Ireland
Telephone: Dublin (01) 419 8800 Fax: Dublin (01) 419 8890 International code: (003531)

Country of origin: United Kingdom – Japan – Thailand – Malaysia. ©Mitsubishi Electric Europe 2017. Mitsubishi and Mitsubishi Electric are trademarks of Mitsubishi Electric Europe B.V. The company reserves the right to make any variation in technical specification to the equipment described, or to withdraw or replace products without prior notification or public announcement. Mitsubishi Electric is constantly developing and improving its products. All descriptions, illustrations, drawings and specifications in this publication present only general particulars and shall not form part of any contract. All goods are supplied subject to the Company's General Conditions of Sale, a copy of which is available on request. Third-party product and brand names may be trademarks or registered trademarks of their respective owners.

Note: The fuse rating is for guidance only. Please refer to the relevant databook for detailed specification. It is the responsibility of a qualified electrician/electrical engineer to select the correct cable size and fuse rating based on current regulation and site specific conditions. Mitsubishi Electric's air conditioning equipment and heat pump systems contain a fluorinated greenhouse gas, R410A (GWP:2088), R32 (GWP:675), R407C (GWP:1774) or R134a (GWP:1430). *These GWP values are based on Regulation (EU) No 517/2014 from IPCC 4th edition. In case of Regulation (EU) No.626/2011 from IPCC 3rd edition, these are as follows: R410A (GWP:1975), R32 (GWP: 550), R407C (GWP:1650) or R134a (GWP:1300).



www.greengateway.mitsubishielectric.co.uk
Mitsubishi Electric UK's commitment
to the environment

Follow us @meuk_Jes
Follow us @green_gateway

Mitsubishi Electric
Living Environment Systems UK

mitsubishielectric2

thehub.mitsubishielectric.co.uk

Effective as of September 2017